


ARCHITECTURAL PRODUCTS

JUNE 2018 // VOL 16 NO 5

ARCH-PRODUCTS.COM

ACOUSTIC PANELS
Snowsound's Flap Wings provide an easy means to add a punch of color to a space and can be attached or oriented in almost any way as needs change.

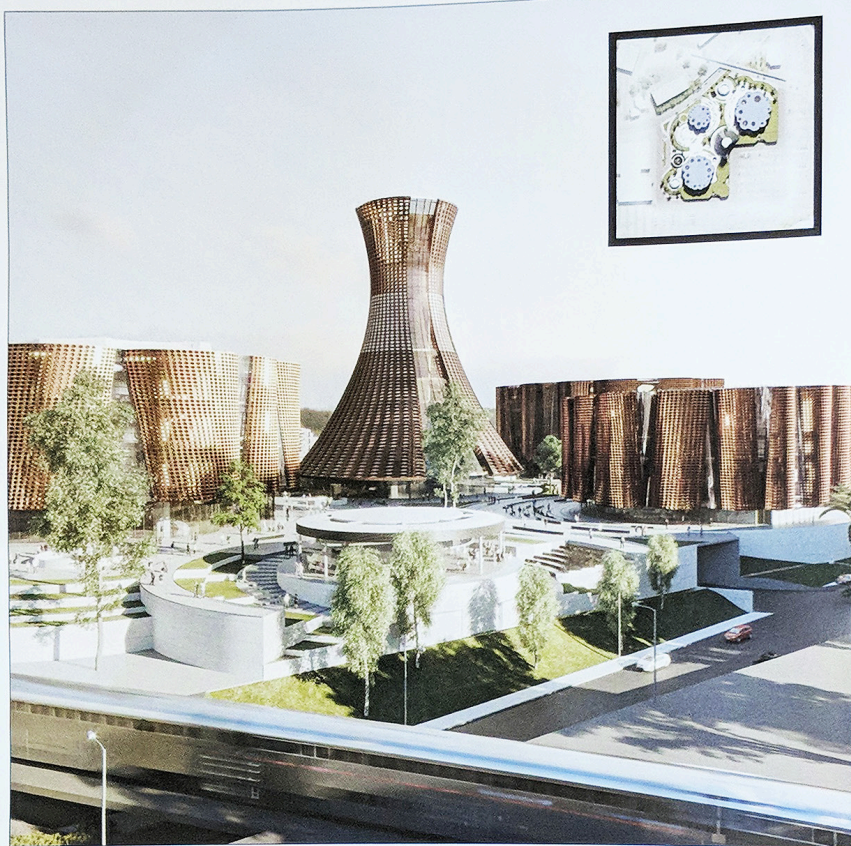


new+improved: office

As the trend of "resi-mercial" continues to expand into office spaces, encouraging conversation and collaboration, addressing acoustics has become a must consideration.



product developments

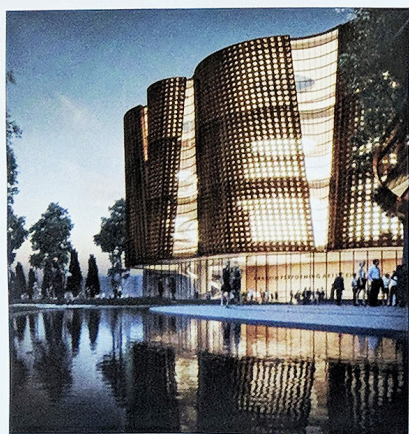


ART IN ARCHITECTURE

From Orange Grove to Urban Arts Center

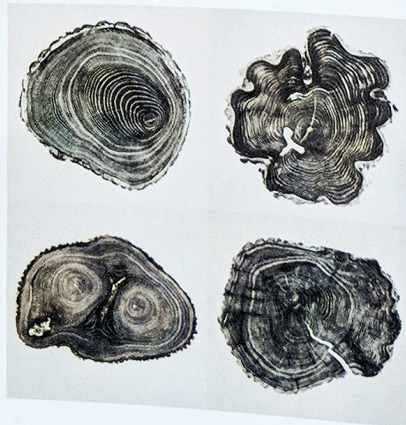
SPF:a's design for the \$500M Anaheim Performing Arts Center is an homage to the local history of citriculture.

The design team started the project by studying the local history to form a narrative of the place. That narrative, in turn, guided and informed a significant design unique to Anaheim, says architect Zoltan E. Pali. Partially inspired by a study of screen-printed woodcuts by local artist Bryan Nash Gill, SPF:a's architect's plans for the 11-acre project drew on California orange groves as its inspiration. Pali describes a proverbial peeling back of the site—presently a parking lot—as “unearthing the ghosts of orange trees.” The rings of each stump contain the history of a tree, and with that the architects took the geometrical archetype of a circle as the basis for the architecture and the way in which the stories of this performing arts center will be told. The architectural rings, built up from the ground into three-dimensional forms with radial symmetry, emerge as a grove of interconnected theaters in a round. “We’re going to let those rings go and they’re going to dance on the site,” says Pali, who departed from the notion of a performing arts center as one big volume, to one made of several intimate interconnected spaces with a civic life linking them in between. “It’s an opportunity to capture something unique and authentic,” says Pali on the company’s YouTube video about the project’s design process. “It feels new and ancient at the same time.”



ART TO ARCHITECTURE

SPF:a's design for the Anaheim Performing Arts Center was inspired by the orange tree, but numerous other tree species were studied, too. Among some of the imagery SPF:a explored, was the work of artist Bryan Nash Gill (1961-2013). Below are several tree cut images by Gill.



INTERCONNECTED SPACES

With a “citrus” inspiration, the Anaheim Performing Arts Center moved away from the notion of a performing arts center as one big volume to one involving more intimate interconnected spaces.

